

100 Artists of the Mid-Atlantic

DC DE MD NJ NY PA

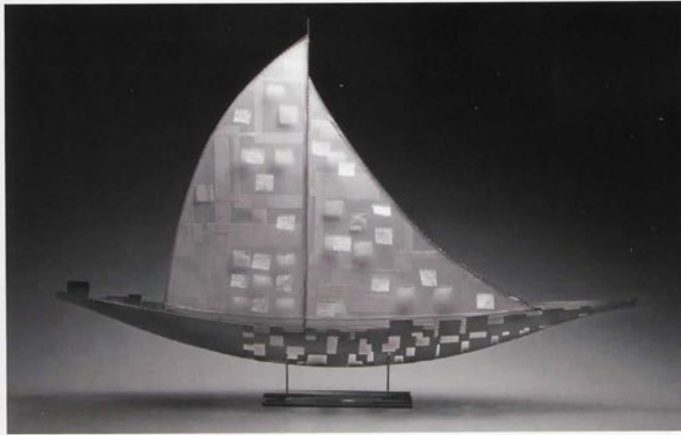
E. Ashley Rooney
With Foreword by Charles Yoder



Schiffer



Nest Boat. Steel rods. A skeletal form in the shape of a boat – it evokes the feeling of a bird's nest. 58 x 8 x 6 in.



Message Boat. Steel boat vessel with hand-stitched paper sail. 56 x 36 x 6 in.



Spheres and Dots. Digital photo image mounted on aluminum. Vellum and nylon thread create the scrim dots. 22 x 30 x 4 in.



Waves of Immigration. Steel boat with hand made book, which has vintage images of child immigrants printed on Arches Watercolor paper. Crinkled vellum is used between each photo image. The hand-sewn book nestles into the boat. There is non-legible writing on the boat's surface to connote the idea of one's personal journal "inviting a narrative, but not spelling it out." 56 x 12 x 8 in.

Julie Girardini

I have been working with cold rolled steel for 18 years...I find it to be hard and durable while also being reflective and serene.

My most recent explorations have led me to create many of the boat forms. I have chosen boats because they are such a symbol of the many passages in our lives. These passages can take on many forms and meanings. Emotion — like getting through some of life's most difficult challenges — the death of a friend or family member, the survival of an illness, changing careers. All of these demand that we take the knowledge and the strength that we have into a new way of life. I have portrayed some of this with nearly legible writing on the *Messages* piece. These are words that could have been written in a diary by an aged hand that tells of missed opportunities and loves lost.

Sometimes the transportations are physical. We board our boat and journey to a different life, a different country. The piece that I was most moved in making was *Passages*. It has photos of child laborers whose families came to this country in the hopes of a better life and what they ended up doing was more hard work than one can imagine. But the work they did is what built the foundation for our country.

Others are sleek vessel forms, and still others seem to be only the ribs with the bulk of the vessel stripped away. I leave much to interpret for the viewer...I ask you to view and enjoy and take a moment to ponder your own life passages.



Photography by Ken Girardini.



Copper Rib Boat. Solid hand-hammered copper. 60 x 8 x 5 in.